

Word Bank



brush

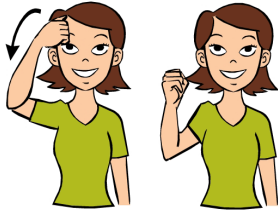
Definition: A tool with many stiff hairs, fibers, etc., that is used for cleaning, smoothing, or painting something.

Word Bank is made possible by



Grow Up Great

CAN YOU SIGN BRUSH?

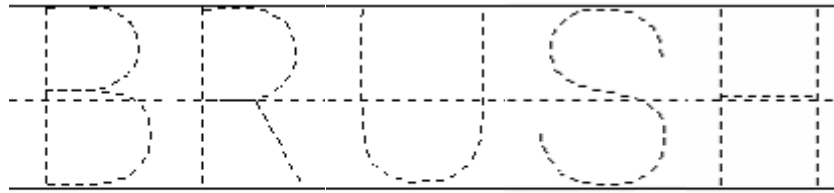


This particular sign is hairbrush.

CAN YOU SPOT THE ALLITERATION?

The brown brush bristles were bent.

CAN YOU TRACE THE WORD BRUSH?



TRY THIS AT HOME

Alphabet Brush

For this particular activity, you will need plain white ice trays, a dry erase marker, and toothbrush. Prior, a grown up will write the letters of the alphabet on the outside of the ice trays, stacked upside down. Afterwards, your child will have the opportunity to brush away the marked letters with the toothbrush. You can promote letter recognition in a variety of ways including dictation, self discovery, word cards, etc.