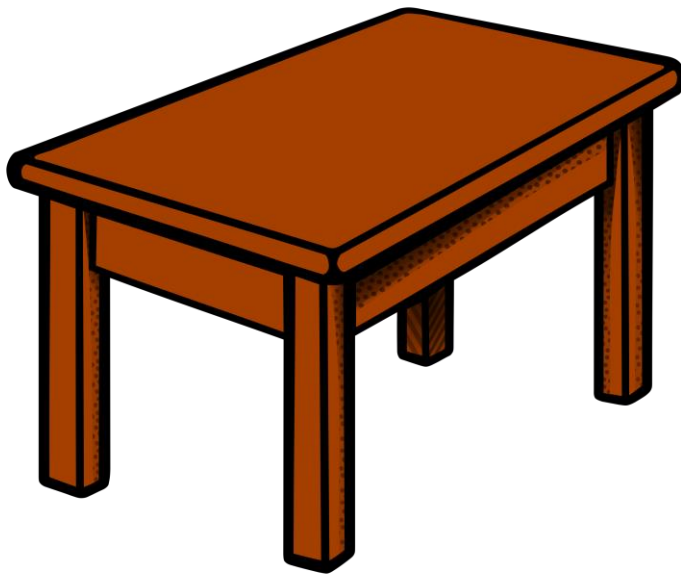


# Word Bank



table

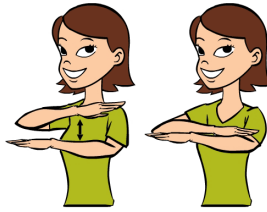
Definition: a piece of furniture that has a flat top and typically four legs.

Word Bank is made possible by



Grow Up Great

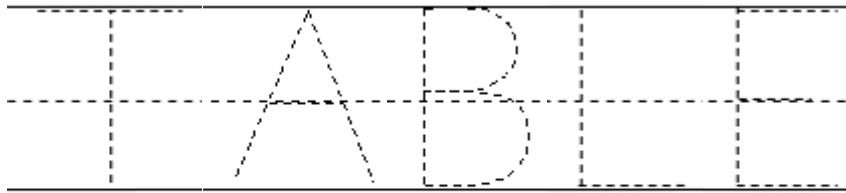
## CAN YOU SIGN TABLE?



## CAN YOU SPOT THE ALLITERATION?

**The tall table towered over the toddler.**

## CAN YOU TRACE THE WORD CHAIR?



## TRY THIS AT HOME

### **Tiny Transportation**

With different colored washi tape, create a small town with roads, parking spaces, etc. that your child can use to simulate driving with different modes of transportation.